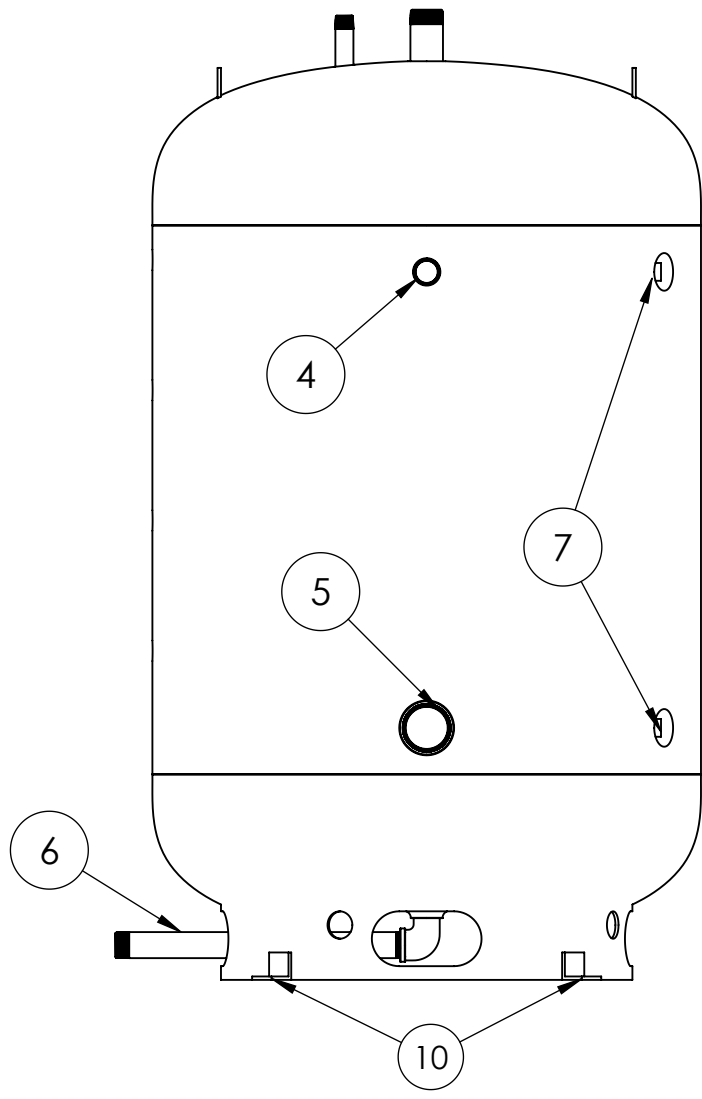
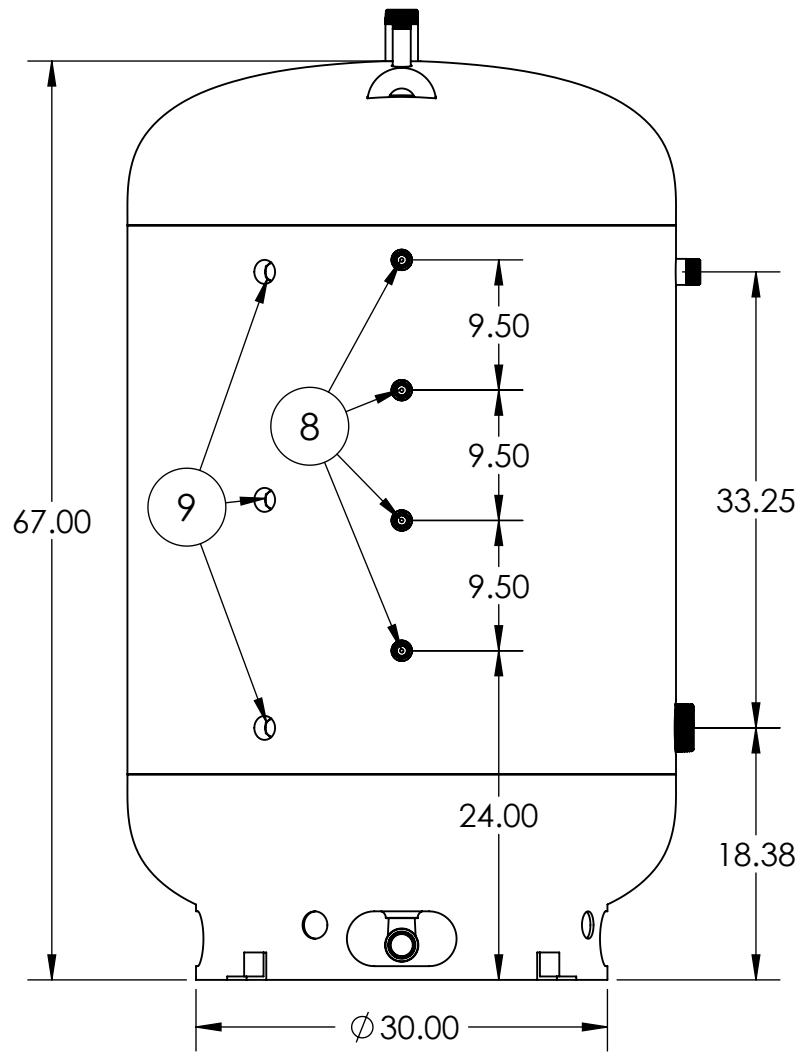
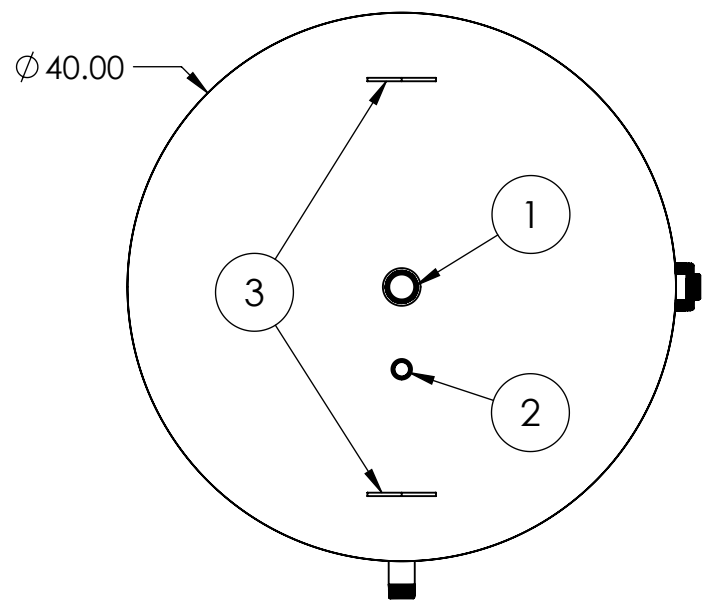


4

3

2

1



Item No.	Size	Description
1	2"	Tank Outlet Nipple
2	1"	Temperature & Pressure Relief Nipple
3	-	Lifting Lug (2x)
4	1-1/2"	Heat Pump Manifold Return Nipple
5	3"	Tank Inlet Nipple
6	1-1/2"	Drain/Heat Pump Manifold Feed Nipple
7	2"	Inspection/Service Port (2x)
8	3/4"	Thermowell (4x)
9	1"	Magnesium Anode (3x)
10	9/16"	Mounting Tab w/Hole (4x)

Notes:

- Volume: 265 Gallons
- 125 PSI Working Pressure
- ASME B&P Vessel Code Section IV Constructed
- HLW Stamped
- Glass Lined
- 2" Outdoor-rated Foam Insulation (ASHRAE 90.1b)
- R-value: >16
- Installed Dry Weight: 577 lbs.

ALL DIMENSIONS IN INCHES

SMALL PLANET SUPPLY  
TUMWATER, WA  
TITLE:  
**WD275 GAL STORAGE TANK**

SIZE	DWG. NO.	REV
<b>B</b>	<b>003-00028</b>	<b>B</b>

SCALE: 1:14      SHEET 1 OF 1

4

3

2

1

B

B

A

A