

4

3

2

1

REMOVABLE HOIST RING

96.57

A

3.00

DROPLET8
SUBMITTAL
(DIMENSIONS & CONNECTIONS)

SIZE	DWG. NO.	REV
B	003-00011	A

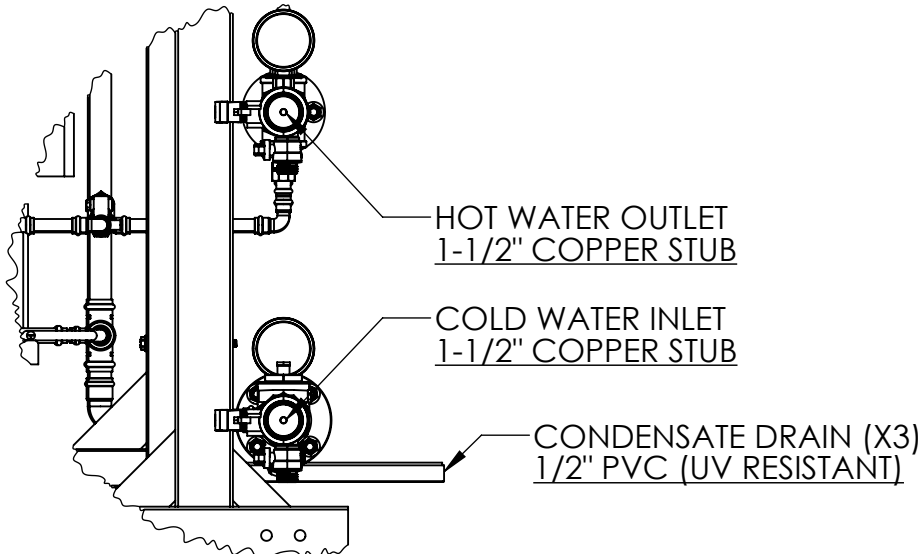
SCALE: 1:20	SHEET 1 OF 4
-------------	--------------

NOTES:

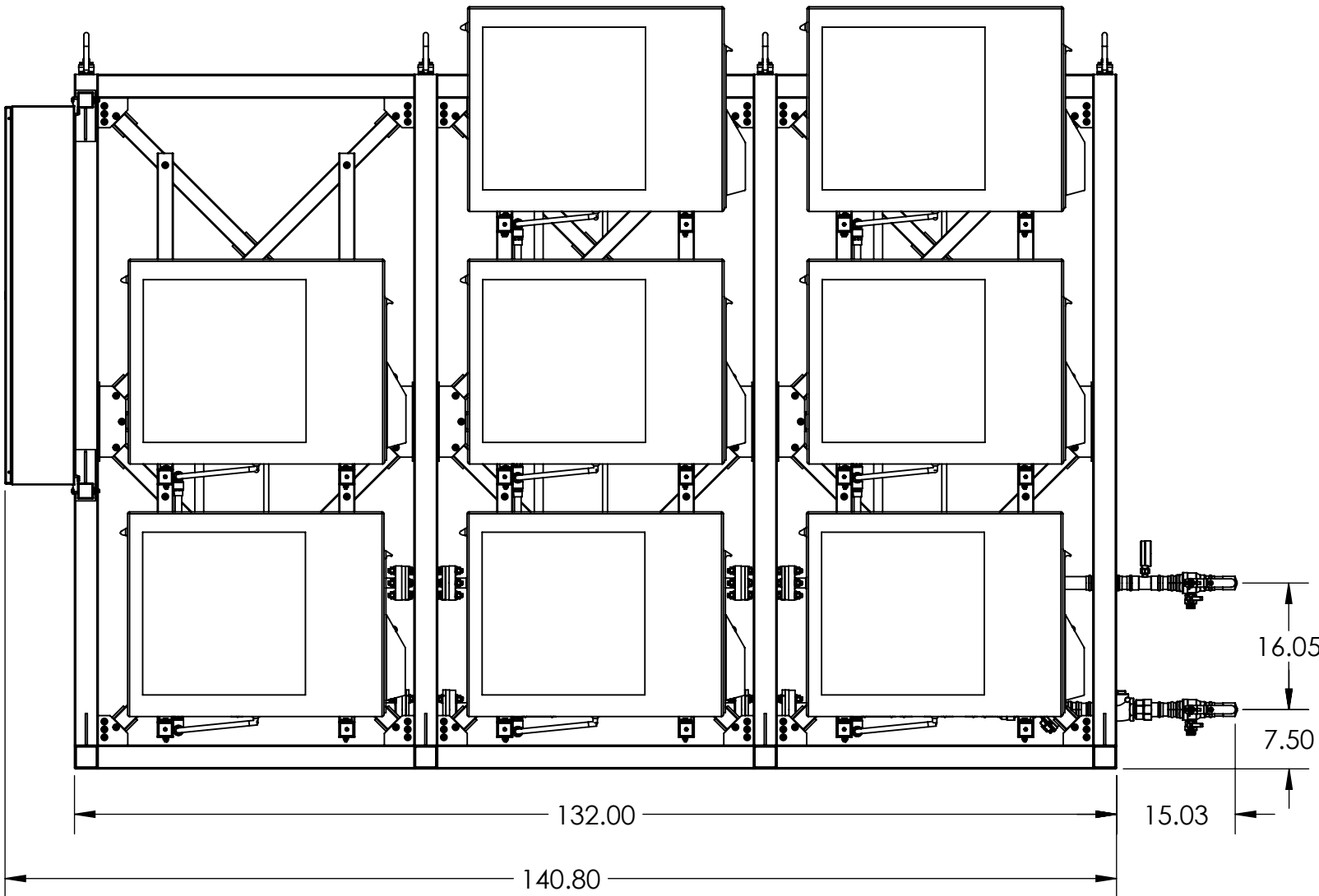
ALL DIMENSIONS IN INCHES

**36" SERVICE CLEARANCE
REQUIRED ON ALL SIDES**

SMALL PLANET SUPPLY
TUMWATER, WA
TITLE:



DETAIL A
PIPING CONNECTIONS
SCALE 1 : 10



1.00 30.00

4

3

2

1

4

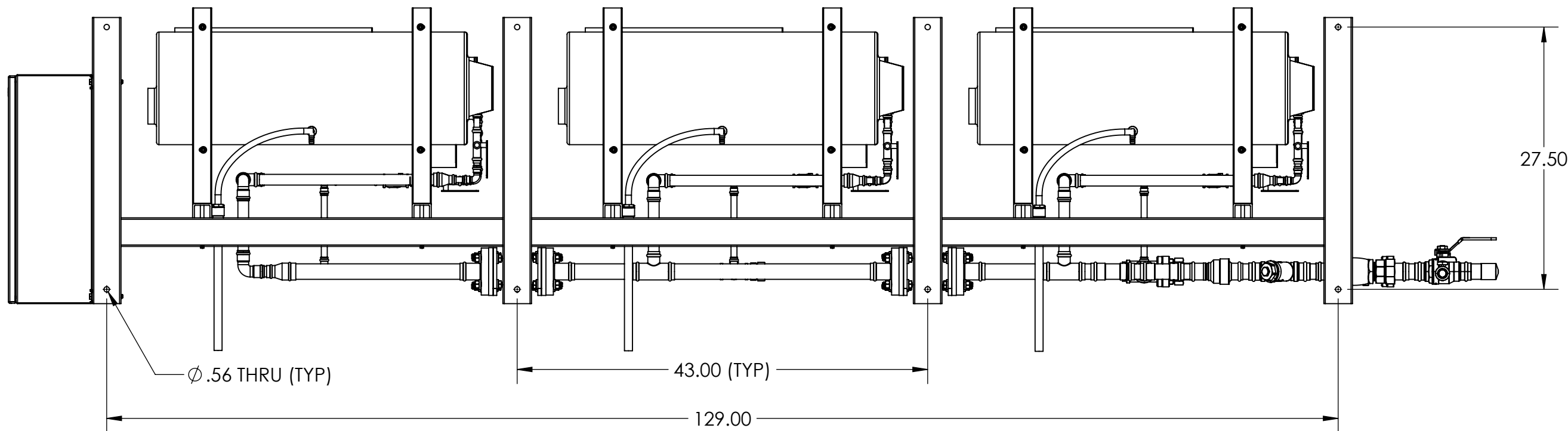
3

2

1

B

B



A

A

ALL DIMENSIONS IN INCHES

ANCHOR REQUIREMENTS:

(8) ANCHORS REQUIRED
1/2" DIAMETER
1,000 lbf UPLIFT CAPACITY PER ANCHOR
750 lbf SHEAR CAPACITY PER ANCHOR

SMALL PLANET SUPPLY
TUMWATER, WA

TITLE:

**DROPLET8
SUBMITTAL**
(MOUNTING REQUIREMENTS)

SIZE

DWG. NO.

REV

B

003-00011

A

SCALE: 1:12

SHEET 2 OF 4

4

3

2

1

B

A

B

A

4

3

2

1

4

3

2

1

PERFORMANCE

HEATING CAPACITY (ABOVE 5°F) [BTUH]	123,200
NOMINAL OUTPUT [GPM @ 100°F LIFT]	2.5
MAX. DAILY OUTPUT [GAL./DAY @ 100°F LIFT]	2,365
MAX. DAILY RUNTIME [HOURS / DAY]	16
AIRFLOW [CFM]	4,800
EXTERNAL STATIC PRESSURE [IN.-H2O]	0
SOUND LEVEL [dB(A)]	40
*MAX. PIPE LENGTH TO STORAGE TANKS [FT.]	55
*MAX. VERTICAL DISTANCE TO STORAGE TANK [FT.]	20
REFRIGERANT TYPE	R-744
TOTAL CHARGE [OZ.]	203.2
MAX. SYSTEM WATER PRESSURE [PSI]	75
HEAT TRACE CAPACITY [W/FT.] (OPTIONAL)	8

*LIMITED BY HEAT PUMP INTERNAL CIRCULATOR PUMP AVAILABLE HEAD

ELECTRICAL

VOLTAGE/PHASE/FREQ.	208V/3Ø/60Hz
FLA [A]	46.2
MCA [A]	61.3
MOCP [A]	70

WEIGHT

DRY WEIGHT, INSTALLED* [LBS.]	2,250
-------------------------------	-------

*APPROX.

COMPONENT & CONSTRUCTION DETAIL

20-MESH WYE-STRAINER LOCATED ON COLD SUPPLY
INDIVIDUAL HEAT PUMP ISOLATION AND CHECK VALVES
HEAT TRACE ON PIPNG AND CONDENSATE DRAIN PANS (OPTIONAL)
PAINTED STEEL FRAME
1-1/2" PIPE INSULATION
TYPE K COPPER PIPING
ONBOARD STAGING CONTROLLER
UL508A PANEL

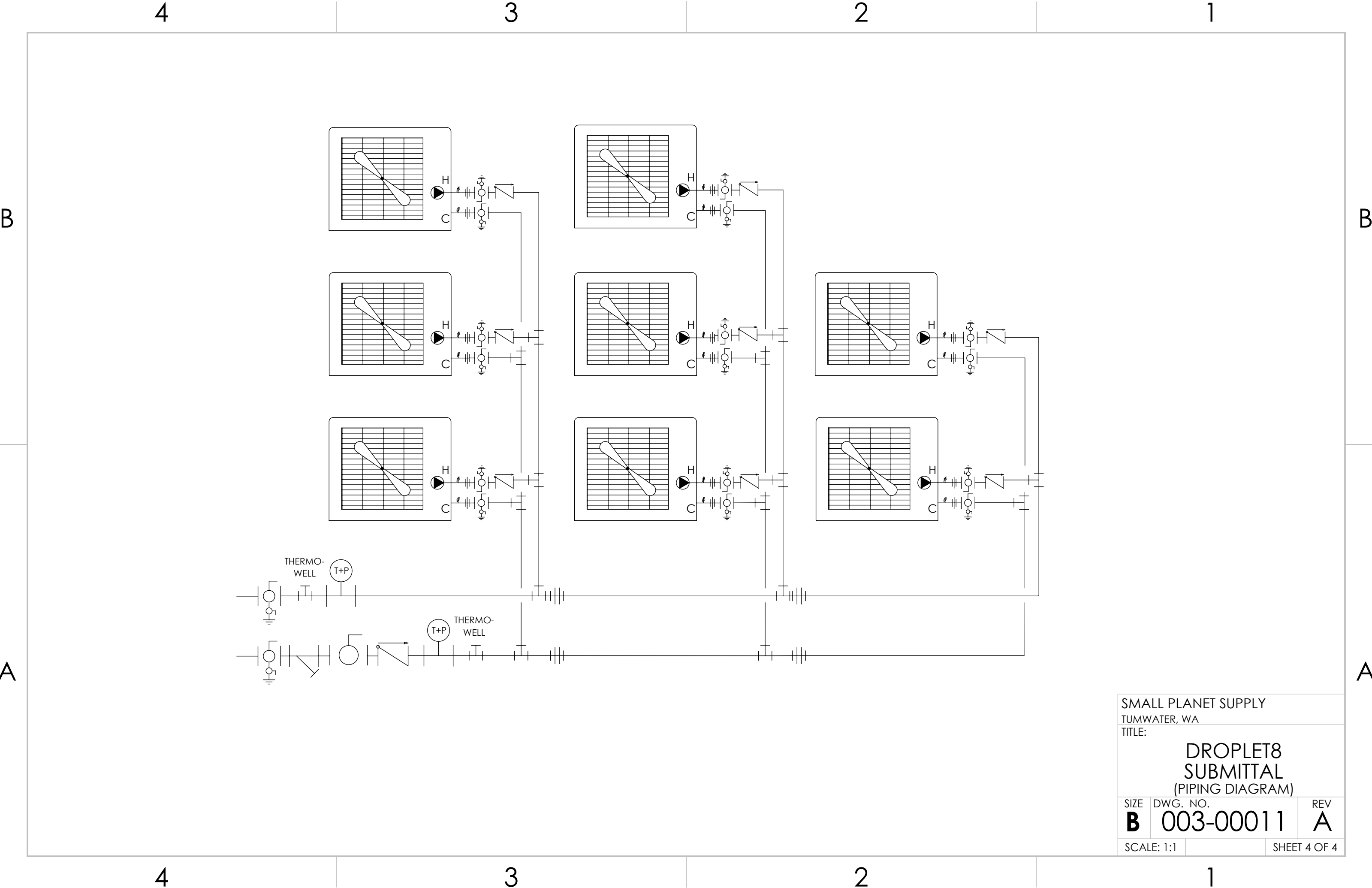
MOUNTING ANCHORS

DIAMETER	1/2"
UPLIFT/PULLOUT CAPACITY [lbf]	1,000
SHEAR CAPACITY [lbf]	750
NO. OF ANCHORS REQUIRED	8

FIELD CONNECTIONS

ELECTRICAL	LINES A,B,C	
	NEUTRAL	
	GROUND	
PLUMBING	HOT WATER OUTLET	1-1/2" COPPER STUB
	COLD WATER SUPPLY	1-1/2" COPPER STUB
	CONDENSATE DRAINS	(3) 1/2" PVC (UV-RESISTANT)

SMALL PLANET SUPPLY		
TUMWATER, WA		
TITLE:		
DROPLET8		
SUBMITTAL		
(TECHNICAL DATASHEET)		
SIZE	DWG. NO.	REV
B	003-00011	A
SCALE: 1:15		SHEET 3 OF 4



SMALL PLANET SUPPLY
TUMWATER, WA
TITLE:

DROPLET8
SUBMITTAL
(PIPING DIAGRAM)

SIZE	DWG. NO.	REV
B	003-00011	A
SCALE: 1:1		SHEET 4 OF 4