

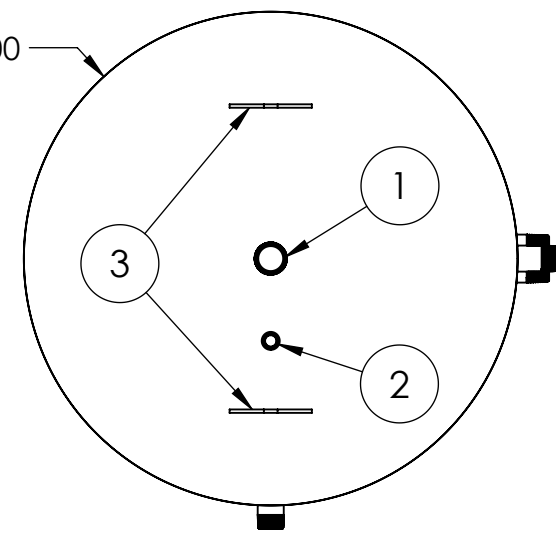
4

3

2

1

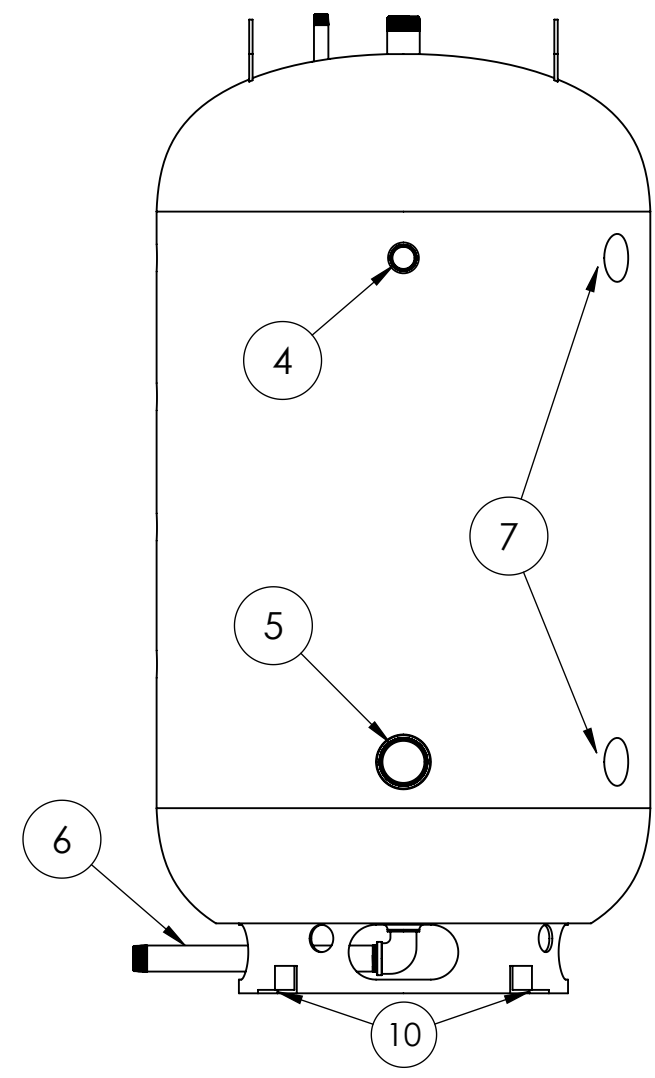
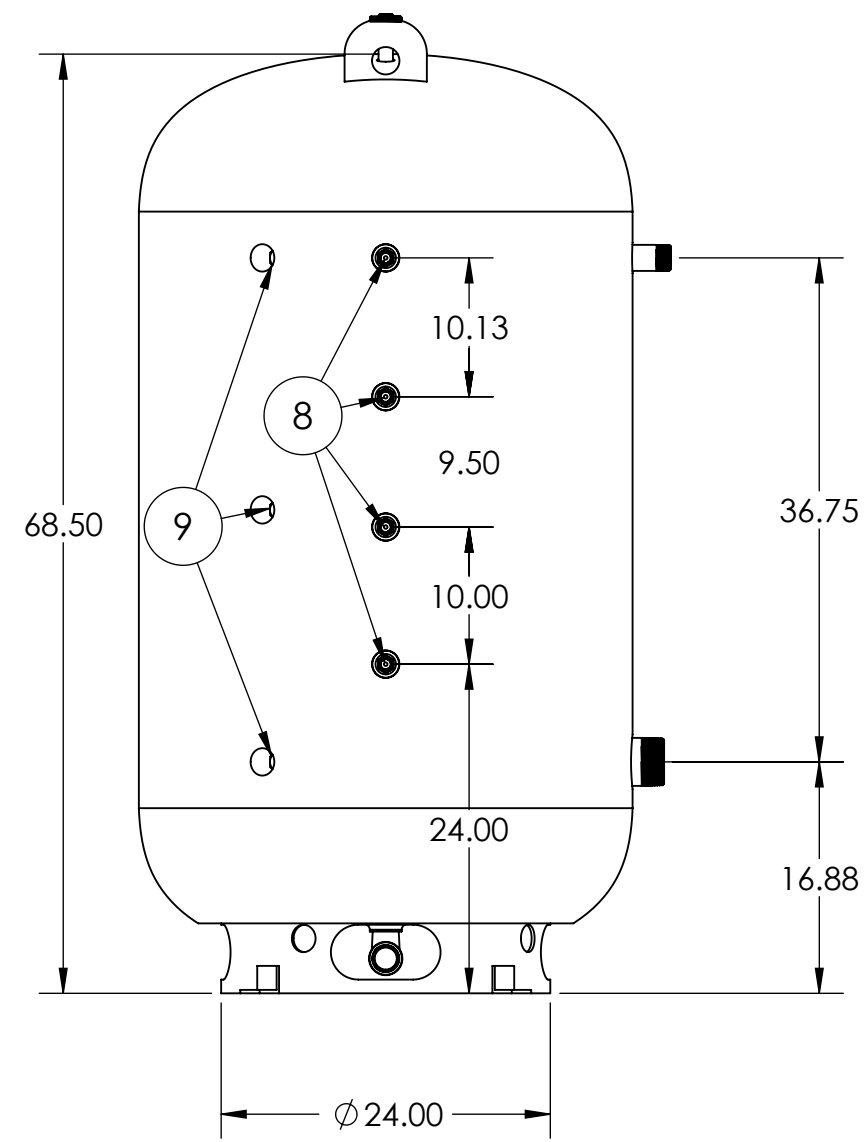
Ø 36.00



Item No.	Size	Description
1	2"	Tank Outlet Nipple
2	3/4"	Temperature & Pressure Relief Nipple
3	-	Lifting Lug (2x)
4	1-1/2"	Heat Pump Manifold Return Nipple
5	3"	Tank Inlet Nipple
6	1-1/2"	Drain/Heat Pump Manifold Feed Nipple
7	2"	Inspection/Service Port (2x)
8	3/4"	Thermowell (4x)
9	1"	Magnesium Anode (3x)
10	Ø 9/16"	Mounting Tab w/Hole (4x)

Notes:

- Volume: 175 Gallons
- 125 PSI Working Pressure
- ASME B&P Vessel Code Section IV Constructed
- HLW Stamped
- Glass Lined
- 3" Outdoor-rated Foam Insulation (ASHRAE 90.1b)
- R-value: >16
- Installed Dry Weight: 468 lbs.



ALL DIMENSIONS IN INCHES

SMALL PLANET SUPPLY TUMWATER, WA		
TITLE: WD175 GAL STORAGE TANK		
SIZE B	DWG. NO. 003-00032	REV B
SCALE: 1:14	⊕	SHEET 1 OF 1

4

3

2

1

B

B

A

A